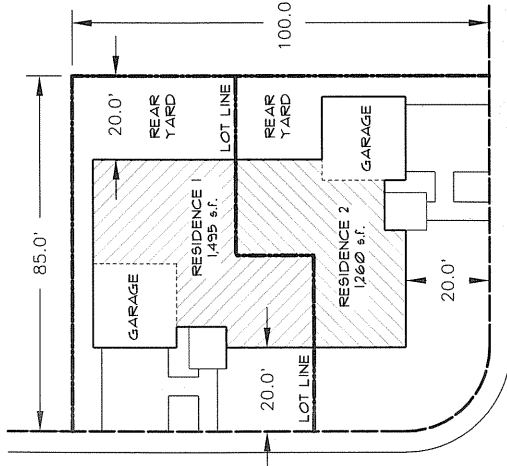
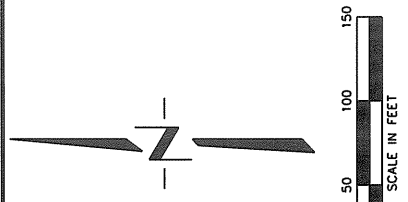
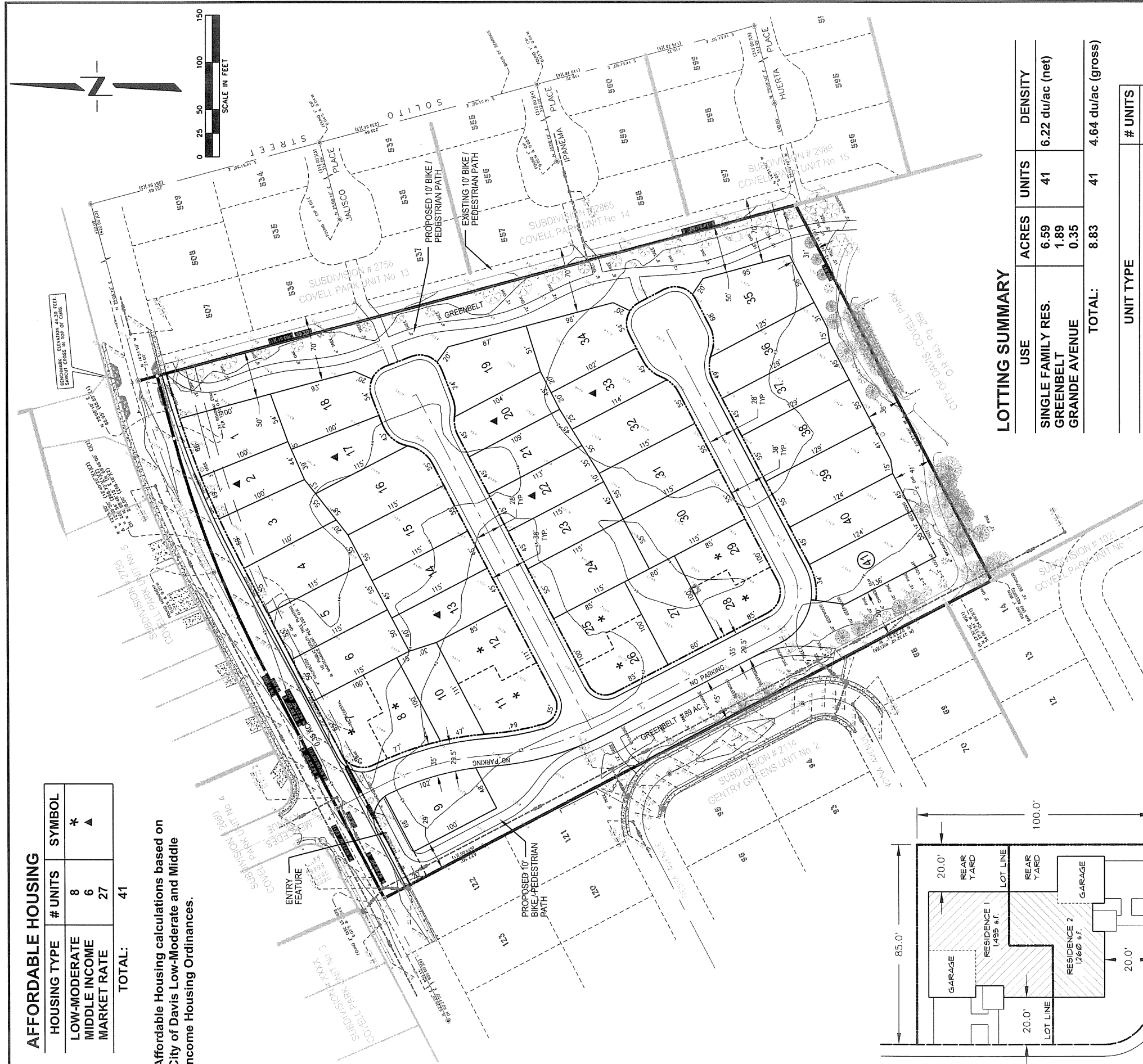


AFFORDABLE HOUSING

HOUSING TYPE	# UNITS	SYMBOL
LOW-MODERATE	8	*
MIDDLE INCOME	6	▲
MARKET RATE	27	
TOTAL:	41	

Affordable Housing calculations based on City of Davis Low-Moderate and Middle Income Housing Ordinances.



TYPICAL CONCEPTUAL CORNER HALF-PLEX
SCALE: 1" = 20'

NOTES:

1. LANDSCAPE PLAN TO BE SUBMITTED TO THE CITY OF DAVIS AT THE TIME OF THE FINAL MAP.

LOTING SUMMARY

USE	ACRES	UNITS	DENSITY
SINGLE FAMILY RES.	6.59	41	6.22 du/ac (net)
GREENBELT	1.89		
GRANDE AVENUE	0.35		
TOTAL:	8.83	41	4.64 du/ac (gross)

UNIT TYPE	# UNITS
SINGLE FAMILY DETACHED - 55' x 100' min.	18
SINGLE FAMILY DETACHED - 45' x 100' min.	15
SINGLE FAMILY ATTACHED - HALF-PLEX	8
TOTAL:	41

DESIGNED BY: JIB
DRAWN BY: JIB
CHECKED BY: SG

SCALE
1" = 50'

DAVIS SCHOOL SITE - GRANDE AVENUE
DESIGN STUDY 6E-4 - 41 UNITS
Single Family detached units & Half-plexes

CITY OF DAVIS CALIFORNIA



Project Planning & Civil Engineering & Landscape Architecture
a Stevens Office
220 20th Street, Suite 200
Sacramento, CA 95838
(916) 455-2026

CECWEST.COM

NO.	DATE	REVISIONS	BY	APPR.	SHEET
					1
					OF 1

DATE: 2/28/08
JOB NO: 931.03